

MASS SCHEDULE

Sunday, February 24

9:00AM ✘ Lee Ratliff By: Munday Family
 11:00AM ✘ Raymond Fumo, Sr. By: Jane Lucas
 1:00PM (Bi-Lingual Mass)
 5:00PM ✘ George Barney & By: Aintrazi Family
 ✘ Josephine LaCombe

Monday, February 24

11:00AM

Tuesday, February 25

6:30PM

Wednesday, February 26

6:30PM Mark Akerman By: MACS

Thursday, February 27

11:00AM Jerry Healy By: MACS

Friday, February 29

NO MASS

Saturday, March 1

5:00PM ✘ Lillian Piccolo By: Gina & Len Short

Sunday, March 2

9:00AM ✘ Trudy Reilly By: Garruto Family

11:00AM ✘ Raymond Fumo, Sr. By: Jane Lucas

1:00PM (Bi-Lingual Mass)

5:00PM ✘ Herbert Lemon By: Rachel Kiker & Family

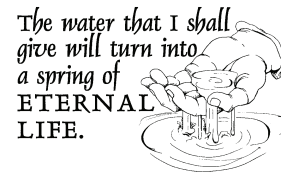


In your kindness please remember the following in our parish...

Joe McGinnis, Mary McGinnis, Gerry Hennessee, Sr. Veronica Grover, Elsie Frye, Fran Wroclawski, Patsy Croce, Carrie Isaac, Clark Phillips, Kay Phillips, Heida Rollins, Bill Rollins, Bob Goodrich, Betty Neyens, John Sturdevant, Ann Sanders, Fran Doyle, Regina Shue, Horace Smith, Valerie King, Danny Kendall, Kenny Edmiston, Buddy Horne, Marion Levrini, Jimmy Deese, Julia Armién, Annette Connell, Maureen Deese, Bill Pickering, Ted Neal, Sue Sansevero, Jake Hagemann, Helen Mulvaney, Don Palmer, Luke McKee, Tiffany Brook, Jan Johnson, Austin Schill, Edna Hess, Olive Werhand, Ardy & Adelaide Stevens, Mary Jo Jones, Nancy Torres, Michael McNally, Jack Ribosh, Debra Collins, Raul Lopez-Ibanez, James Shue, Marie Mahnke, Molly Raiola, Don Ruggiero, Sharon Speights, Bill Enos, Sharon Glose, Pat Viola, Cody Herrick, Pat Winburn, Liz & Charles Cooper, Charles & Beverly Siever, Mary Mulholland, Joanne Franze, Faith Petho, Miguel Alonso, David Weaver, Nancy Gallucci, Cindy Ladimir and among our friends and family...

Sonny Lentini, Terry Mangi, Donna Gorton, Carla Green, Helen McDaniel, Chase Belk, Alyan Evans, Gina McGrath, Beth Laney-Smith, Anne Woitkowski, June Keiper, Isabella Santos, Sid Schell, Lillian & Stephen Piccolo, Stephen Flohr, Gus Giustozzi, Joan St. Aubin, Charles McNeil, William Shackleton, Patty Amrien, John and Fran McMorro, Michael Shue, Isabella Santos and Joe Keller

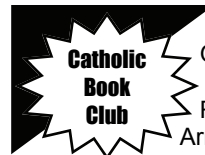
(Previously named friends and family members are now placed in our Book of Intentions)



In Christian love and sympathy, we remember

CHARLES SPENCE, Child to Francis & Kareen Spence
JUDY CARUSO, Sister-In-Law to Marie-Michele Darcy
AL JORDAN, Father to Doug Jordan
BERNADETTE REILLY, Mother to Sharon Monahan
LILLIAN PICCOLO, Mother of Roz Piccolo, Patti Flohr,
 Gina Short and Bernadette Buttafucce

May the Lord grant them peace and consolation to their families.



The February book selection is "Can't Wait to Get to Heaven" by Fannie Flag. Read and join us on February 26 at 10:30AM in the Conference Room. For more information call Marilyn Armstrong at 704-753-1112.



High School Youth Ministry/ Confirmation Pot Luck Dinner (Grades 9-12)—Sunday, March 2 from 6:15-8:00PM in the Family Life Center.

Sign up on the easel in the church or email RSVP to cherylfinch@carolina.rr.com. (Sorry, no activities for younger siblings.)

Easter Egg Hunt—Youth Ministry is requesting help with donations for the Palm Sunday Easter Egg Hunt. We need small items to stuff in eggs: non-chocolate candy, stickers, rings, toys, fuzzy chicks, etc. Please bring donations to tubs in the brick area. Donations needed before March 8.



The CSS Charlotte Regional Office extends a sincere thank you to everyone who has contributed to its food pantry. Since 2007 we have experienced a 26% increase in the number of people served. Your continued contributions are needed now more than ever.

**Helping
Other
People
Endure**

HOPE members will meet Saturday, March 1, at 10:00AM in St. Luke's Family Life Center. Our meeting is open to all parishioners interested in learning more about HOPE. New members are always welcome. We look forward to seeing you there! For more information contact Madeline Johnson at 704-846-9327.

Our **Kairos Prison Ministry team** needs your support for the upcoming retreat at Evans Correctional Institution in March. We need volunteers who can assist in: baking cookies; writing cards; and/or prayer chain sign ups. Please call Steve Daly at 704-365-2566 or Stephen Uzzell at 704-545-0498 for more information.

The Knights of Columbus will host Fish Fries on Fridays during Lent at 4:00PM in the brick area. Eat-in and Take-out orders available. Please join us.



"Blessed are the Merciful"—Your gift to the DSA is used only for the educational, multicultural, vocational, housing, and social service ministries of the diocese. Thousands of people depend on your generosity. Thank you for your support.

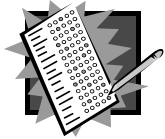


St. Patrick's Day Party
 Saturday, March 8 at 7:00PM
 Food—Fun—Fellowship—Families
 \$7 per adult; \$3 per child or \$20 a family
 Sign up at the brick area.
All are welcome!!!

THANKS

to our **SPONSOR OF THE WEEK...**
 This week we would like to thank
ERIN DE LUCA, ALLEN TATE REAL-TORS for advertising in our bulletin.

Pilgrimage to Greece & Turkey—Fr. Jim will lead a 14 day pilgrimage following the "Footsteps of St Paul". The dates are October 7-20, 2008 and the itinerary includes 2 nights in Istanbul, 1 night each in Kavala, Thessaloniki, Kalambaka and Delphi, and 3 nights in Athens. A three day cruise to Mykonos, Rhodes, Patmos and Ephesus is also included. The cost is \$3550 each. Deposit is \$450 each and final payment is due by July 1, 2008. The package includes air from Charlotte, GSO, RDU, daily breakfast and dinners, First Class hotels, air conditioned motor coach, and English speaking guide. For additional information and brochures, call John Tagnesi, toll-free 1-888-544-4461.



Catholic School Expansion Study Survey—The Diocese of Charlotte is conducting a study to determine present and future needs for Catholic Schools throughout the Diocese. To support this study a survey is being mailed out to a random number of registered Catholics across the Diocese. This survey is being conducted by Catholic Education Consulting Services (CECS). If you receive a survey please take the time to complete it and return it in the self-addressed stamped envelope that is enclosed. Your opinion is very important to us and can provide valuable insight into the needs of our Diocese.

This Week in our Parish

Sunday, February 24
Children's Liturgy at Mass
 11:00AM RCIA Scrutiny
 12:00PM Confirmation Retreat—FLC
 6:00PM Faith Formation Grades 6-9
 6:00PM Teens 4 Christ—FLC

Monday, February 25
 10:30AM Rosary—Chapel
 4:00PM Faith Formation Grades K-5—FLC
 5:00PM Youth Choir—Worship
 5:15PM Children's Choir—FLC
 6:00PM Faith Formation Grades 6-9—FLC
 7:00PM Boy Scouts—FLC
 7:00PM Servant Leadership Team Mtg.—Conference Room
 7:15PM Ascension—Worship

Tuesday, February 26
 9:00AM Playschool—FLC
 10:30PM Book Club—Conference Room
 4:30PM Faith Formation Grades K-5—FLC
 6:00PM Faith Formation Grades 1-5—FLC
 7:15PM RCIA—FLC


Wednesday, February 27
 10:30AM Bible Study—Conference Room
 4:30PM Faith Formation Grades K-5—FLC
 6:15PM Faith Formation Grades 1-8—FLC

Thursday, February 28
 9:00AM Playschool—FLC
 9:30AM ESL—Library
 10:00AM Staff Meeting—Conference Room
 7:00PM Penance Service—Worship Space
 7:00PM Cub Scouts—FLC
 7:00PM ESL—Conference Room

Friday, February 29
 9:00AM Playschool—FLC
 3:00PM Stations of the Cross—Worship
 4:00PM Fish Fry—Brick Area
 5:00PM Room in the Inn—FLC
 7:30PM Stations of the Cross—Worship

Saturday, March 1
 10:00AM Baptismal Preparation Class—Brick Area
 10:00AM HOPE Committee Meeting—FLC
 3:00PM Church History Session—FLC
 6:00PM Cub Scouts Lock-In—FLC

Sunday, March 2
Children's Liturgy at Mass
 9:00AM RICA Scrutiny
 2:30PM First Communion Retreat—FLC & Worship Space
 6:00PM Youth Ministry & Confirmation Dinner—FLC

 *Parish Support*

Offertory February 17:	10,688.50
We Care (7.5% of offering)	<801.64>
Debt Elimination	973.00
Total	\$11,661.50

Thanks to your recent Offertory donations, the WE CARE Committee was able to make a donation to PEOPLE IN NEED AT SAINT LUKE PARISH.

REMINDER: Direct Draft options for Horizon/Offertory contributions are now available! Please visit www.stlukechurch.net/donations.htm for an online form and further information, or call Lori Kissinger at 704-545-1224 x11.

Registered Families:	1450
Envelope Users for month of January:	679

We don't give because we have an abundance of resources and can afford it; we give because of a desire to share what we have with others out of love and gratitude.

If today you hear His voice,
 ♥ **harden not your hearts.**